

# Agrion

TIMED ONLINE

# Mt. Pleasant

Equipment located at the Steffes Group Facility,  
2245 East Bluegrass Road, Mt. Pleasant, IA

Inspection Day: Wednesday, August 26th from 9AM-4PM

**OPENS: TUESDAY, AUGUST 25TH / CLOSURES: THURSDAY, AUGUST 27, 2020 AT 10AM**

**AUCTIONEER'S NOTE:** Don't miss your opportunity to bid on this Timed Online Multi-Ring equipment auction. Contact auctioneers for owner information, new consignments or changes at 319.385.2000.  
**LOADOUT:** Friday, August 28th from 9AM-4PM or Monday, August 31st from 9AM-4PM. ALL other load out times are by appointment only, please call office to schedule! 319-385-2000.  
Equipment must be removed by Friday, September 11, 2020, unless other arrangements are made.



## Kenneth Trimpe J.I. CASE TRACTOR COLLECTION

### 2WD TRACTORS

- 1973 Case 1070, 2WD, partial powershift, cab, 3 pt., 540 PTO, diesel, WF (Owner states 300 hrs. on engine OH)
- 1970 Case 970, 2WD, partial powershift, cab, 3 pt., 540 PTO, WF, Eagle A/C
- 1967 Case 841 Comfort King, 2WD, gas, open station, 3 pt., Case-O-Matic, NF, power steering
- 1965 Case 731C Comfort King, 2WD, diesel, 3 pt., Case-O-Matic, NF, power steering
- 1963 Case 930 Western Comfort King, 2WD, diesel, no 3 pt., 540 PTO, WF, 6 speed, radiator weights, (4) rear weights, rebuilt starter
- 1957 Case 511B, 2WD, gas, open station, Eagle hitch, 540 PTO, NF, power steering
- 1957 Case 411, 2WD, gas, open station, Eagle hitch, 540 PTO, NF, power steering
- 1951 Case VAC, 2WD, gas, Eagle hitch, NF, fenders (engine free, non-running)
- 1948 Case VAC, 2WD, gas, NF, 11-2-34 tires (motor stuck)
- 1947 Case VAC, 2WD, gas, NF, side pulley, 10-28 tires, 38" rims (motor stuck)



### GARDEN TRACTORS

- Case 108, gas, hyd. drive
- Case 130, gas, hyd. drive
- Case 222, gas, hyd. drive
- Case 224, gas, hyd. drive, 42" deck

### WEIGHTS & PARTS

- (10) Case 70 Series front weights
- (2) Case VAC rear wheel weights
- (11) Case rear wheel weights
- (8) IH rear wheel weights
- (2) Farmall Cub/AB wheel weights
- Case front weight starting block
- Case 30 Series tractor parts
- Case 311/411 tractor parts
- Case VAC tractor parts
- Case VAC fenders
- Case VAC tinwork
- Case 930 radiator
- Case hyd. cyl.
- (2) Case 311/411 rear tires w/rims & (1) spin out 13.6-28 tires
- Farmall H tinwork & parts
- IH mufflers
- Steel wheel running gear
- Aux. Fuel Tank, side mount, return line, top mount toolbox

### TILLAGE

- Case, 5-bottom plow, 14", pull-type, hyd. lift (no cylinder)
- Case, 4-bottom plow, 18", semi-mount, hyd. cyl., gauge wheels
- Case, 4-bottom plow, 18", semi-mount
- (4) Case, 3-bottom plow, 14", Eagle hitch, (1) Case Green, (1) Case Power Red
- (2) Case, 2-bottom trip plow (1-18", 1-16")
- Dearborn, 2-bottom plow, 14", 3 pt.
- IH McCormick Deering, 2-bottom plow, pull-type
- Oliver, row crop cultivator, 2-row, hand lift, pipe mount, spring shovels, C spring shank shovels (Oliver Red)
- Oliver, row crop cultivator, 2-row, hand lift, pipe mount, mounted shovels (Oliver Red)



## Dave & Jason Loving MASSEY-HARRIS TRACTOR COLLECTION

- 1959 Massey Ferguson 50, 6,292 hrs., 2WD, gas, 4 cyl., 1 hyd., 3 pt. w/quick hitch, 540 PTO, WF, half shell fenders, 3 speed, 2-range, sells w/6" blade, bolt on edge, 13.6x28 rears, 6.00x16 fronts, S/N 527174
- 1957 Massey Ferguson 50, gas, 4 cyl., 3 pt., 540 PTO, WF, no tinwork clamshell fenders, 12.4x28 rears (not matching), 6.70x15 fronts, S/N 513006 (non-running)
- 1956 Massey Ferguson 555, diesel, 4 cyl., no hyd., 540 PTO, WF, American Bosch pump, Wheatland style fenders, wheel weights, 7.60x16 fronts, 18.4x34 rears, S/N 21090
- 1951 Massey Harris 44, gas, 4 cyl., 4.3L, 1 hyd., drawbar, 540 PTO, NF, fenders 13.9-38 rears, 5.5-16 fronts, S/N 44-UR23318
- 1950 Massey Harris Pony, gas, 4 cyl., 1.0L, receiver hitch, 540 PTO, WF, fenders, 9.5-24 rears, 4.00-15 fronts, S/N 11337
- 1949 Massey Harris 22, gas, 4 cyl., 2.3L, drawbar, 540 PTO, NF, hyd. lift, fenders, 11.2-28 rears, 4.00-15 fronts, S/N 22-GR2672
- 1947 Massey Harris 30, gas, 4 cyl., 2.7L, drawbar, 540 PTO, NF, fenders, 11.2-38 rears, 5.00-15SL fronts, S/N 30-GR2012
- 1947 Massey Harris 55, gas, 4 cyl., 6.3L, drawbar, 540 PTO, WF, belt pulley, fenders, 16.9-34 rears, 5.00-15 fronts, S/N 1764
- 1941 Massey Harris 81, gas, 4 cyl., 2.0L, drawbar, 540 PTO, NF, fenders, 12.4-28 rears, 4.00-15SL fronts, S/N 402652
- 1941 Massey Harris 101 Twin Power Jr., gas, 4 cyl., 2.0L, drawbar, 540 PTO, NF, fenders, 13.9-36 rears, 5.00-15 fronts, S/N 396786
- Massey Harris 33, gas, 4 cyl., 3.3L, drawbar, 540 PTO, NF, fenders, 14.9-38 rears, 5.5-16SL fronts, S/N 33GIFF9893
- Tractor Frame, gas, 4 cyl., 540 PTO, NF, no tinwork, 11.2x28 rears (non-running - parts only)

- 1998 John Deere 8400T, 6,517 hrs., track tractor, powershift, 16 speed, 4 hyd., 3 pt., Lg. 1000 PTO, return flow, 24" tracks, S/N RW8400T902328
- 1995 Caterpillar 85C Challenger, 7,173 hrs., track tractor, powershift, 10 speed, 4 hyd., 3 pt. w/quick hitch, Lg. 1000 PTO, AM/FM/CD radio w/remote control, air ride seat (air valve not working properly), aux. LED lighting, 30" Goodyear tracks w/2-1/2" bars, S/N 43701475



### TRACK TRACTORS

- 1998 John Deere 8400T, 6,517 hrs., track tractor, powershift, 16 speed, 4 hyd., 3 pt., Lg. 1000 PTO, return flow, 24" tracks, S/N RW8400T902328
- 1995 Caterpillar 85C Challenger, 7,173 hrs., track tractor, powershift, 10 speed, 4 hyd., 3 pt. w/quick hitch, Lg. 1000 PTO, AM/FM/CD radio w/remote control, air ride seat (air valve not working properly), aux. LED lighting, 30" Goodyear tracks w/2-1/2" bars, S/N 43701475

### 4WD TRACTOR

- 2006 Case-IH STX 280HD, 2,014 hrs., 4WD, powershift, lux. cab, red leather, 4 hyd., return flow, 3 pt., Lg. 1000 PTO, guidance complete, 372 receiver, WAAS, Pro 600 display, NAV II controller, diff. lock, hammer strap drawbar, 480/80R42 duals, S/N Z6F100616

### MFWD TRACTORS

- 2010 John Deere 6230 Premium, 1,885 hrs., MFWD, partial powershift, cab, instructional seat, 3 hyd., 3 pt. w/quick hitch, 540 PTO, LH reverser, foot throttle, dual doors, front fenders, sells w/JD 673 loader, joystick control, 86" bucket, (2) 450 lb. rear wheel weights, 460/85R38 rears, 340/85R28 fronts, S/N L06230K632709
- 2005 John Deere 8220, 6,158 hrs., MFWD, buddy seat, 4 hyd., 3 pt. w/quick hitch, Lg. 1000 PTO, GreenStar auto steer ready, hammer strap, dual mirrors, quick hitch, side aux. lights, Hi-Flow 60 gal. min. hyd. pump, climate control cab, StarFire iTC receiver included, (12) front suitcase weights w/bracket, (4) 450 lb. rear wheel weights, 18.4-R46 rear tires w/hub duals, 14.9-R34 front tires w/fenders, S/N RW8220P034050
- 1996 John Deere 8100, 6,886 hrs., MFWD, powershift, 3 hyd., 3 pt., 1000 PTO, power beyond, 18.4-42 rear duals, 14.9R30 fronts, S/N RW8100P005876
- 1995 John Deere 7800, 3,522 hrs., MFWD, powershift, 19 speed, cab, 3 hyd., 3 pt., 540/1000 PTO, front fenders, (2) 450 lb. rear wheel weights, (6) front fenders, 18.4R42 rear duals, 14.9R30 fronts, S/N RW7800P013819
- 1997 John Deere 6400, shows 988 hrs., MFWD, open station, 2 hyd., 3 pt. w/quick hitch, 540 PTO, sells w/JD 640 loader & 7" bucket, hyd. controls, manual attachment release, 18.4-34 rears, 13.6-24 fronts, S/N L06400V185684

### 2WD TRACTORS

- 1990 John Deere 4255, 7,100 hrs., 2WD, powershift, CAH, 3 hyd., 3 pt. w/quick hitch, 540/1000 PTO, front fenders, (5) suitcase weights & bracket, (2) 450 lb. rear wheel weights, 18.4-38 rears, S/N RW4255P004577
- 1981 John Deere 4440, 11,991 hrs., 2WD, quad range, cab, 3 hyd., 3 pt., 540/1000 PTO, sells w/Koyker 510 loader & 2-prong bale spear, (loader is 2 years old), front fenders, 18.4-38 rear duals, 11.00-16 fronts, S/N 4440H044059R
- 1981 International 1486, 6,713 hrs., 2WD, cab, 2 hyd., 3 pt., 540/1000 PTO, 480/80R38 rears, 11.00-16SL fronts, S/N 2650143U28608
- 1977 International 1086, shows 70 hrs., 2WD, cab, 2 hyd., 3 pt., 540/1000 PTO, 480/80R38 rears, 10.00-16 fronts, S/N 26101770014808
- 1974 John Deere 4630, 7,861 hrs., 2WD, 8 speed synchro, cab, 2 hyd., missing 3 pt. arms, 1000 PTO, 480/80R38 rears, 11.00-16 fronts, S/N 4630W007054R
- Case 2590, 5,898 hrs., 2WD, partial powershift, cab, 2 hyd., 3 pt., 1000 PTO, 20.8-38 rears
- International 1086, 2WD, cab, 2 hyd., 3 pt., 540/1000 PTO, sells w/Farm Hand XL945 loader, 18.4-38 rears (from factory - no torque amplifier)
- International 806, diesel, NF
- International 856, 2WD, cab (does not run)
- International 806, gas, fast hitch, NF (does not run)
- International 706, NF
- International 706, gas, 3 pt., 540 PTO, WF, w/loader (does not run)
- Farmall 560, diesel, 1 hyd., fast hitch, 540 PTO, WF, fenders, aftermarket turbo, transmission brake (Owner states less than 600 hrs. on overhaul)
- Farmall 400, diesel, 1 hyd., fast hitch, 540 PTO, NF, 12V alternator (Owner states torque amplifier is weak on the low side)

### ANTIQUE TRACTORS

- 1959 Farmall 560, shows 4,050 hrs., 2WD, diesel, 3 hyd., WF, fast hitch, restored w/paint, gauges, lights, glow plugs, Firestone 15.5-38 rears, 6.00-16 fronts, S/N 16844 (Owner states tractor purchased from original owner, has good torque & working generator)
- 1953 John Deere 50, gas, 1 hyd., factory 801 3 pt., Rolomatic NF, 12.4-38 rears, 5.50-16 fronts, S/N 5012319 (Owner states working original lights & generator, restored w/paint, rebuilt magneto, new intake & exhaust)
- 1948 Farmall, gas, open station, 540 PTO, NF, 12V, S/N 174599X1
- John Deere 830, diesel, 1 hyd., 540 PTO, WF, pony start motor, fenders

### COMBINES

- 2001 John Deere 9750 STS, 2,772 sep./4,231 eng. hrs., 2WD, Contour-Master, GreenStar yield monitor w/brown box, chopper, SS hopper liners, 20" unload auger, hopper ext., 20.8-R42 Firestone front duals, S/N H09750S691701
- 2000 John Deere 9750 STS, 3,120 sep./4,618 eng. hrs., 2WD, Contour-Master, Y&M, Ag Leader display, Ag Leader receiver, single pt., variable speed feeder house, rock trap, chopper, spreader, fixed hopper ext., 20.8-42 front duals, 18.4-26 rears, S/N H09750S686491
- 1995 John Deere 9500, 3,274 sep./4,673 eng. hrs., air ride seat, Vitteetoe chaff spreader, Cray Big Top ext., 20" unload auger, 24.5-32 tires, S/N H09500X661104 (work orders over \$15,000, available online for viewing)
- 1992 Case-IH 1660 Axial Flow, 4,830 hrs., PRWD, Cummins engine, chopper, chaff spreader, air ride seat, grain scan monitor, J&M hopper ext., 17" unload auger, 30.5L-32 fronts, 16.9-26 rears, S/N JJC0104502 (Owner states gear box bracket broke)
- 1982 International 1460, 4,937 hrs., IH diesel, electric over hyd. controls, spreader, 30.5-32 fronts, S/N 17002324033251
- Case-IH 1640, 5,200 eng. hrs., 2WD, standard rotor, Vitteetoe chaff spreader

### DRAPER HEADS

- 2010 MacDon, flex draper head, 45", hyd. fore/aft, single pt. hooksups, set up for John Deere, S/N 201572 (Owner states serviced w/grease, oil, & filter on 7/20/2020)
- 2011 MacDon FD70, flex draper head, 40", hyd. fore/aft, single pt. hooksups, set up for John Deere, S/N 207362 (Owners states serviced w/grease, oil, & filters on 7/7/20)
- 2010 MacDon FD70, flex draper head, 40", hyd. fore/aft, single pt. hooksups, Case Red poly, set up for Case-IH, S/N 199610 (Owner states serviced w/grease, oil, & filters on 6/22/20)
- 2010 MacDon FD70, flex draper head, 40", hyd. fore/aft, single pt. hooksups, set up for John Deere, S/N 204606 (Owner states missing pulley on drive, missing sickle drive, some damage on head)
- 2009 MacDon FD70, flex draper head, 40", hyd. fore/aft, single pt. hooksups, set up for Case IH 5088-6088, S/N 192651 (Owners states serviced w/grease, oil, & filters on 7/14/20)

### FLEX HEADS

- 2009 John Deere 635F, Hydra-flex head, 35", hyd. fore/aft, single pt. hooksups, full fingered, stubble lights, short stone dam, poly snouts, short & long knives, S/N H00635F731181
- 2003 John Deere 930F, flex head, 30", full fingered, lights, poly snouts, Contour-Master sensors & drives, S/N H00930F701278
- 1996 Case-IH 1020, grain platform, 20", mechanical fore/aft, poly fingers, HHS, lights, S/N JJC0219220
- John Deere 920F, flex head, 20", hyd. fore/aft
- John Deere 213, grain platform, 19", S/N H00200X581037
- IH 820, grain platform, 15", new sickle, S/N 1480103U015697

### CORN HEADS

- John Deere 893, corn head, 8x30", single pt. hooksups, knife rolls, hyd. deck plate, HHS, lights, S/N H00893X705897
- IH 963, corn head, 6x30", poly snouts
- (2) John Deere 444, corn head, 4x38"

### HEAD TRAILERS

- (4) Benda Ag Manufacturing, head trailer, 40', single axle, 295/75R22.5 tires
- United Farm Tools, head trailer, 25', 20.5x8-10 tires
- Move Master, head trailer, 20', 20.5/8-10 tires, S/N 10082189
- Head Trailer, 20', JD 953 running gear

### TRENCHER & DOZER

- 1988 Vermeer 455A, trencher/backhoe, backfill blade, 2,783 original hrs., 6' trench, set up for 6' trench, (1) owner
- Case 450, dozer, diesel, ROPS, 8' blade
- Bradco 9HD, backhoe, 3 pt. attachment
- 2009 Bobcat S220, 1,945 hrs., skid steer, cab, heat, aux. hyd., S/N A5GK35429
- 2007 Bobcat S250, 3,310 hrs., skid steer, cab, heat, hand/foot controls, hyd. quick tach, 2 speed (Owner states new bushings)
- 2004 Case 85XT, 4,715 hrs., skid steer, ROPS, 71" material bucket, aux. hyd., S/N JAF03985838 (Owner states hydrostatic issues)
- Mustang 920, 1,423 hrs., 3 cyl., diesel, cab, foot controls, quick tach, S/N 7217521

### NEW SKIDSTEER ATTACHMENTS

- Lowe 750, hyd. auger, 12"
- Stout HD72-8, brush grapple
- Stout XHD84-6, brush grapple
- Stout HD72-FB, grapple bucket
- Stout HD72-3, rock bucket grapple
- Stout, material bucket, 84", w/double-cut edge
- Stout, tree & post puller
- Hawz HD, brush mower, 72", standard flow
- Hawz, rock & brush grapple, 68", 3" tine spacing
- Hawz, rock & brush grapple, 74", 3" tine spacing
- Hawz, rock & brush grapple, 78", 3" tine spacing
- Hawz, rock & brush grapple, 84", 3" tine spacing
- Hawz, rock bucket, 68", 3" tine spacing
- Hawz, rock bucket, 74", 3" tine spacing
- Hawz, rock bucket, 78", 3" tine spacing
- Hawz, rock bucket, 84", 3" tine spacing
- Hawz, root grapple, 72", 6" tine spacing
- Hawz, root grapple, 84", 6" tine spacing
- (1) Hawz Tree & Post Puller, up to 8" post
- (4) Hawz Quick Attach Plates, weld on
- (2) Hawz Pallet Fork Extensions 84"
- (2) Hawz Receiver Hitch Trailer Movers
- (4) Skeleton Grapple Bucket 76", dual cylinder
- (2) Spade Bucket, 40"
- (4) Trash Hopper, 2 cu. yd.
- (2) Telehandler Trash/Debris Container, 7 cu. yd.
- (2) Grapple Bucket 78", dual cyl.
- (4) Skeleton Bucket, 84", open sided
- (78" Bucket, single blade
- (4) Skid Steer Frame w/guard
- (10) Skid Steer Frame Fork Extensions, 84", light duty
- (4) Hitch Receiver, 2"
- (4) Snow Bucket, 90"
- Tooth/Grapple Bucket Pallet Forks

### SPRAYERS & SPREADERS

- Miller Pro 1000, pull-type sprayer, 60' boom, 1,000 gal. tank, 3-section shutoffs, Raven 440 controller, (S/N 29826) Richway boom tracker, foam controller, hyd. drive pump, foam markers, single nozzle tips, chemical inductor, 13.6x38 tires, S/N 07-01001 (Owner states pump rebuilt in 2019, shutoff valves new in 2018, new set of Dicamba spray tips, never used)
- New Holland 513, manure spreader, 540 PTO, single axle, lime beater, wood floor
- New Idea 214, manure spreader, 540 PTO, pull-type, sloop gate, flail spreader, 13.00-24 tires, S/N 176540
- Saddle Tanks & Brackets, fits JD 8400T, (2) 300 gal. side tanks, (1) 300 gal. front tank w/plumbing

### PLANTERS

- 2002 John Deere 1780, planter, 24x20", drawbar, front fold, ground-driven, vacuum, MaxEmerge Plus, NT coulters, seed firmers, Schaffert 2x2 fertilizer liquid in furrow, 1/2 section disconnect, spring down pressure, markers, S/N A01780C695234
- Case-IH 1240, planter, 16x30", drawbar, pivot, vacuum, bulk fill, Lg. 1000 PTO, hyd. drive variable rate, rubber closing wheels, markers, pneumatic down pressure, row shutoffs (2) rows each, S/N YCS028957
- John Deere 7000, planter, 6x30", coulters, double disc openers, insecticide boxes, markers, rubber closing wheels, meters, no monitor
- International 800 Cyclo Air, planter, 6x30", hyd. pump 1000 PTO, hyd. row guides, S/N 0970746U012992

### DRILL

- Great Plains 1510, grain drill, 15', 9" spacing, ground-driven, on Great Plains CPH-15 cart, NT coulters, small seed attachment, spring tine harrow, S/N 10387C

### TILLAGE

- John Deere 722, soil finisher, 13', pull-type, rear 5-bar spring tooth harrow, walking tandems, S/N 00722X001579
- Case-IH Tiger Mate 200, field cultivator, 42', double fold, manual adj. leveler, walking tandems across, 3-bar spring tine harrow
- John Deere 1100, field cultivator, 24-1/2'
- Brent, disc ripper, 5-shank, pull-type, 23" front blades, 22" rear blades, manual adj. gangs, hyd. lift, lights
- Unverferth Brent, ripper, 5-shank, hyd. controls, 16L-16.1 tires
- Unverferth, subsoiler, 4-shank, S/N A39560108
- Glenco Soil Saver Series III, chisel plow, 11'
- Brady, chisel plow, 10-shank, 3 pt.
- Agco 1500, disc chisel, 9', 7-shank, pull-type, hyd. lift w/Remlinger 4-bar harrow, (2) circle rear weights
- Brillion, cultimulcher, 15', pull-type, hyd. lift, manual adj. tines, tandem wheels
- IHC 490, disc, 20', 9" spacing, tandems on main, singles on wings, hyd. wings, adj. tongue
- Kewanee 1010, disc, 16', dual wings, hyd. wing & height control, rear hitch, 9.5L-15SL tires Disc, 8", 3 pt.
- Allis Chalmers, 4-bottom plow, semi-mount, hyd. height adj., 7.75-14/7.50-14 tires, S/N 571103-167
- Antique Plow, 2-bottom, 2x16", pull-type, manual control, rear depth wheel, 7.00x16L1T tires
- Massey Ferguson, 3-bottom plow
- Row Crop Cultivator, 4-row, 3 pt.
- Grover Mfg., harrow gator, 24', pull-type, whyd. wings

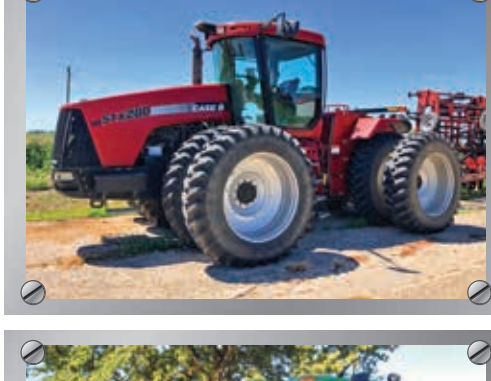
### HAY EQUIPMENT

- Case-IH 8312, mower conditioner, 1000 PTO, hyd. adj., 11L-15SL tires, S/N CFH0106857
- Case-IH 8575 Silage Special, square baler, 1000 PTO, hyd. controls, 21.5L-15.1SL tires, S/N CFH0163775
- New Holland, square baler
- International 27, small square baler, 540 PTO
- H&S RR420, hay rake, 540 PTO, pull-type, walking tandems, hyd. raise/lower, manual settings, front jack, S/N RRE106
- M&W RC456, V-rake, hyd. wings, 8-wheel, 19.5/60R14 tires, S/N 21106
- M&W, V-rake, 12-wheel, hyd., ST205/75R15 tires
- Gehl WR206, wheel rake, 6-wheel, pull-type, hyd. lift, 5.90x15SL tires, S/N 3066
- John Deere 350, hay rake, 4-bar, 540 PTO, 3 pt. optional, pull-type, hyd. lift
- John Deere 350, sickle mower, 9' bar
- International, sickle mower, 5', 540 PTO, wobble box drive, hyd. lift w/JD cyl., fast hitch mount
- New Idea 521, sickle bar mower, 9', 540 PTO, pull-type, S/N N150083
- Hay Trailer, gooseneck, round bale

### AUGERS

- Auger, 10'x70", 540 PTO, RH drive, hand crank lift, 215/75R15 tires
- Mayrath, swing hopper, 10'x60", 540 PTO, hyd. lift, and drive, 235/75R15 tires, S/N 424531
- Westfield, swing hopper, 8'x60", 540 PTO, mechanical drive, w/perforated screen, hyd. lift
- Mayrath, swing hopper, 8'x60", 540 PTO, hyd. driven, hyd. raise/lower
- Westfield, swing hopper, 8'x60", 540 PTO, hyd. lift, hyd. drive
- Westfield, ag hopper, 8'x61", 540 PTO
- Peck, ag hopper, 8'x61"
- Westfield W80-51, ag hopper, 8'x51", 540 PTO, manual crank, S/N 23712
- Auger, 8'x52", 540 PTO, galvanized, left side drive, hand crank lift, (no hopper), 205/75R14 tires, S/N 3388
- Feteri, truck auger, 8'x31", Briggs motor
- Bin Sweep, 18", w/electric motor

### LIST CONTINUES AND MORE PHOTOS ON REVERSE SIDE



Complete Lot Listings and Photos at **SteffesGroup.com**

Steffes Group, Inc. | 2245 East Bluegrass Road, Mt. Pleasant, Iowa 52641 | 319.385.2000

TERMS: All items sold as is where is. Payment of cash, check or credit card must be made sale day before removal of items. Statements made auction day take precedence over all advertising. \$35 documentation fee applies to all titled vehicles. Titles will be mailed. IA Sales Tax laws apply. Canadian buyers need a bank letter of credit to facilitate border transfer.

# AUCTIONS



### GRAIN CARTS & WAGONS

**M&W Little Red Wagon**, auger cart, 500 bu., 1000 PTO, corner auger, pit dump, hyd. flow gate & auger raise/lower, lights, 23.1x26 tires

**John Deere**, grain cart, front ladder, 540 PTO, hyd. auger, 49XD tires

**DMI Big-Little**, gravity flow, front ladder, left side dump, spring load tongue, rear hitch, 14.5/75-16.1 tires, S/N 000314

(2) **DMI**, gravity flow, 300 bu., flotation tires

(2) **Gravity Flow Wagon**, 300 bu., RH dump w/chute & pit door dump option, ext. tongue, rear hitch, (3) 16.5-16.1 floater tires, (1) 385/65R22.5 tire

**J&M**, gravity flow, 250 bu., Westendorf gear, 9.5-15 tires on 6-bolt rims

**Dakon**, gravity flow, rear ladder, LH dump, tongue ext., rear hitch, 12.5-15 tires

**Bradford**, gravity flow, 225 bu.

**Farm King**, gravity flow, 225 bu.

**Parker**, gravity flow, 150 bu.

**Gravity Flow Wagon**, 150 bu.

**Gravity Flow Wagon**, front ladder, LH dump, rear hitch, 9.5L-15 tires

(2) **Galvanized Flare Box Wagon**, JD 953 running gear, w/hoist



### SILAGE EQUIPMENT

**Highline 6600 Pro**, bale processor, 540 PTO, S/N 96P16836

**Badger**, silage wagon, Badger running gear

**International 110**, silage wagon, electric gear

**Silage Wagon**

**Artsway 450**, grinder mixer, (gear box will not turn)

**New Holland 890**, chopper, 540 PTO, pull-type

**Fox**, 2-row chopper, pull-type

### TRAILERS

**2001 Pacesetter**, livestock trailer, 16'x80", tandem axle, bumper hitch, 7,500 lb. GVWR, steel, wood floor, (1) divide, lights, brakes, 205/75R15 tires, VIN 1K9BJ26F01H048007

**2012 Delta**, gooseneck, 25'+5' dovetail, 96" wide, tandem axle, wood deck, (2) folding ramps, chain box, 235/80R16 duals, steel rims, VIN 4MWWG302XD0N031628

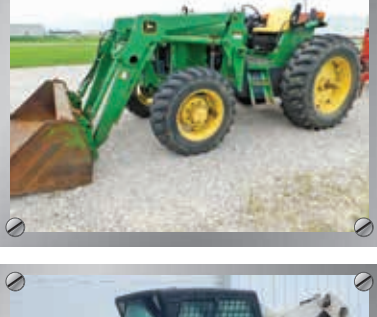
**May**, tandem axle, 20', gooseneck style, (2) 7,000 lb. axles

**2015 Triple R**, enclosed trailer, 7'x14', tandem axle, bumper hitch, 7,000 lb. GVWR, V-nose, rock guard, curb door, rear ramp door, brakes, lights, 205/75R15 tires, VIN 59N1E1425FB001462

**Tandem Axle Trailer**, 16'x7', 2' dove tail, 2-5/16" hitch, side compartment ramps, P235/75R15 tires

**Small Utility Trailer**

**Utility Trailer**, tandem axle, 8'x6'



### VEHICLES

**2015 Chevrolet Silverado 1500 LT Texas Edition**, 264,006 miles 4WD, 5.3L, FlexFuel, 4-door, heated cloth seats, bed cover, sliding rear window, backup camera, running boards, AM/FM CD, power windows, power locks, P275/55R20 tires, VIN 3GCUKRECFG196312 (Owner states A/C does not work)

**2004 Ford F350 Super Duty**, 270,217 miles, 4WD, Powerstroke diesel, Lariat King Ranch, crew cab, automatic, power windows, locks, & mirrors, tilt, cruise, A/C, leather interior, long box, running boards, Reese hitch, brush guard bumper, 265/75R16 tires, alum. wheels, single rear wheels, VIN 1FTSW31P24E49684

**2001 Dodge ST2500**, Quad Cab, 235,813 miles, 4WD, automatic, 5.9 Cummins (never chipped, stock engine), short box, AM/FM/CD Cassette, A/C, electric brake controller, gooseneck ball hitch, rear receiver hitch, Tonneau bed cover, 285/75R16 tires, VIN 1B7KF23661J615442

**1995 Ford F250**, 2WD, 8 cyl., 5.8L, regular cab, long bed

**2016 Ford Edge SE**, 77,225 miles, FWD, 2.0L EcoBoost, auto, 4-door, cloth seats, power windows, power locks, AM/FM CD, P245/60R18 tires, VIN 2FMPK3G93GBC00518

**1961 Ford Thunderbird**, 112,000 miles, original power train & interior, (fuel cell in trunk, could not find fuel tank to match), new rear tires

### MOWERS

**Buhler Farm King Y750R**, finish mower, 84", floating 3 pt., 540 PTO, rear discharge, pneumatic tires S/N 27812345

**John Deere 220**, stalk chopper, 20', 1000 PTO, 7.60-15SL tires, S/N P00220X001506

**Bush Hog**, mower, 5', 540 PTO, 3 pt.

**Land Pride**, finish mower, 5', 540 PTO, 3 pt.

**Woods RM59**, finish mower

### BLADES

**Brillion NVHL-270 XHD**, blade, 9', 3 pt., hyd. angle, hyd. shift, hyd. tilt, S/N 08-09-308-0013

**Big Ox**, blade, 9', 2 pt., manual tilt & angle adjustment

**Blade**, 6', 3 pt.

### NEW FENCING

(80) 20' 6-Bar Continuous Fence Panels w/clips & connections

(50) 10' Interlocking Corral Panels

(16) Free Standing Buffalo Panels

### EQUIPMENT

**Snow Blower**, 3 pt., 540 PTO

**Homelite 320**, snowblower

**International**, end gate seeder.

**Curbside Collector**, vacuum wagon, 540 PTO, Goossen vacuum, steel impeller blades, hyd. lift/dump, new tires

(8) **John Deere**, Suitcase Weights

**3 Pt. Utility Cart**

**3 Pt. Bale Forks**

**Forks Saver**, bale spear, 3 pt.

**Westendorf**, bale spear

**Carry-All**, 7'x4', 3 pt.

**Ford Big Block 391**, engine

**Running Gear**, 6 Ton w/hyd. hoist & steel hayrack frame

(4) ST175/80D13 trailer tires

(10) 90" cattle feeder, (NEW)

(8) Rolls of 47" wire

**Honda 4.0** engine

**Hotsy**, pressure washer w/burner

**Scaffolding** (8) 7'x5', (8) cross braces, (8) stand-offs, (4) swivel casters

(3) 30"x57" welding table, (NEW)

(6) 29"x90" work bench w/shelf, (NEW)

(9) 29"x60" work bench, (NEW)

(4) Dueling Tree shooting target for .22 Cal., (NEW)

(4) 3/8" AR500 Dueling Tree shooting target (NEW)

(2) 3/8" AR500 Spinner shooting target (NEW)

**Sandblaster & Stand**

**Delta** table saw/jointer

**Iron Worker** on stand

**Industrial Shop Vac** system

**Portable plastics regenerator/regrinder**

**Industrial pneumatic vacuum/material transporter**

5'x15" roll around table frame

**Greenlee** conduit bender

**Stihl TS 420** chop saw

### LAWN EQUIPMENT

**Power Trac PT 1430**, 121 hrs., w/bucket

**Turco**, sod cutter, Honda 5.5 hp.

**Stone Mixer**, Honda 5.5 hp., w/new trailer

**Cub Cadet SLTX 1050**, 225 hrs., mower conditioner, 50" deck

**Yard Works**, lawn sweep

**Stihl B 650**, leaf blower

**Echo PB-225LN**, leaf blower

**Black-Decker**, weed eater

**Jonsered**, tiller

**Earthquake**, tiller, Briggs & Stratton

**Poulan Pro**, pole saw



TIMED ONLINE  
Closes: Tue., Aug. 25  
Mason City, IA  
Multi-Party Farm Equipment



TIMED ONLINE  
Closes: Thur., Aug. 27  
AgIron Timed Online Mt. Pleasant, IA



TIMED ONLINE  
Closes: Fri., August 28  
Schwade & Others  
Multi-Party Farm Equipment

Coming Soon

VIEW ALL AUCTIONS AT **SteffesGroup.com**

West Fargo, ND | Grand Forks, ND | Litchfield, MN | Mt. Pleasant, IA | Mason City, IA | Ames, IA | Sioux Falls, SD  
701.237.9173 | 701.203.8400 | 320.693.9371 | 319.385.2000 | 641.423.1947 | 515.432.6000 | 712.477.2144



Online Bidding Available!  
400+ Lots to be sold!

Steffes Group, Inc.  
2245 East Bluegrass Road  
Mt. Pleasant, IA 52641



PRE-SORTED  
MARKETING  
US POSTAGE  
PAID  
PERMIT # 316  
FARGO ND



**AgIron**  
Fall 2020

August 27  
Mt. Pleasant

September 3  
Litchfield

**SteffesGroup.com**

Contact auctioneers for owner information, new consignments, or changes at 319.385.2000.



PLEASE NOTE: Don't miss your opportunity to bid on this Timed Online Multi-Ring equipment auction. Contact auctioneers for owner information, new consignments or changes at 319.385.2000. TERMS: All items sold as is where is. Payment of cash, check or credit card must be made sale day before removal of items. Statements made auction day take precedence over all advertising. \$35 documentation fee applies to all titled vehicles. Titles will be mailed. IA Sales Tax laws apply. Canadian buyers need a bank letter of credit to facilitate border transfer.

COMPLETE DETAILS AT STEFFESGROUP.COM